

Portalampada Edison

Edison Lamp-holders



ATTACCO/ CAP

E14

Art. 050

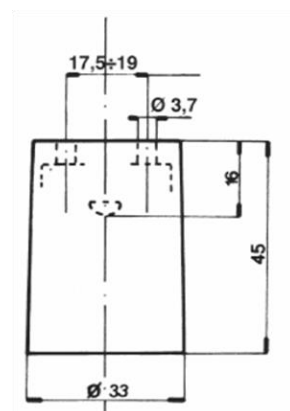
Per lampade ad incandescenza
For incandescent lamps

Nota:

Data la particolare resistenza termica del portalampada in porcellana, esso è indicato anche per l'uso con lampade alogene a tensione di rete

Notes:

In consideration of its particularly high thermal resistance, this porcelain lampholder can be used also with main voltage halogen lamps



DATI TECNICI

Tensione nominale:	250 V
Corrente nominale:	2 A
Temperatura di funzionamento:	T200°C
Tipo di connessione conduttori:	Morsetto
Capacità connessione morsetti:	0,5 ÷ 2,5 mm ²
Corpo in porcellana	
Contatti in ottone nichelato	
Conforme direttiva:	2006/95/CE
Peso	gr. 50

TECHNICAL DATA

Rated voltage:	250 V
Rated current:	2 A
Nominal highest working temp.	T200°C
Type of connection	Terminals
Terminals connection capacity	0,5 ÷ 2,5 mm ²
Porcelain body	
Nickel-plated brass contacts	
In conformity with directive	2006/95/CE
Weight	gr. 50

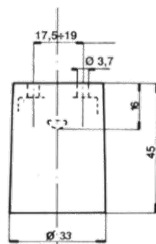
Portalampada *lamp-holder*

Ø50

versioni disponibili / *available versions*

Ø50

Portalampada in porcellana E14

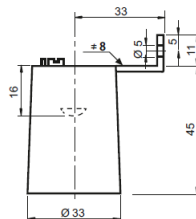


Ø50

Porcelain lampholder E14

Ø50/B

Portalampada assemblato con staffa a 90° completa di vite per messa a terra idonea per cavi 0,5 ÷ 2,5 mm²

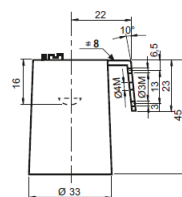


Ø50/B

Lampholder assembled with 90° clamping plate completed with earthing screw suitable for leads 0,5 ÷ 2,5 mm²

Ø50/D

Portalampada assemblato con staffa a 100° completa di vite per messa a terra idonea per cavi 0,5 ÷ 2,5 mm²

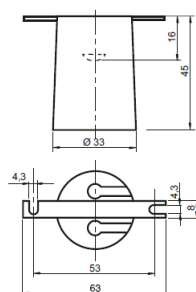


Ø50/D

Lampholder assembled with 100° clamping plate completed with earthing screw suitable for leads 0,5 ÷ 2,5 mm²

Ø50/G

Portalampada assemblato con staffa dritta

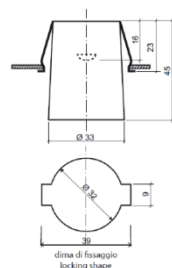


Ø50/G

Lampholder assembled with straight clamping plate

Ø50/U

Portalampada assemblato con molla per aggancio rapido a U per pareti di spessore 0,5 ÷ 2,5 mm²



Ø50/U

Lampholder assembled with rapid hooking U-spring for walls thickness 0,5 ÷ 2,5 mm²