

Portalampada G9

G9 Lamp-holders



ATTACCO/ CAP

G9

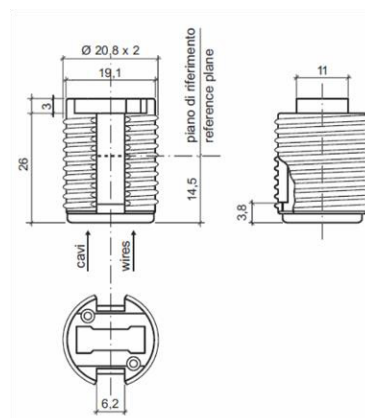
Art. 043

Per lampade ad incandescenza
ad alogeni a tensione di rete
*For main voltage halogen
incandescent lamps*

Nota/Notes

Il portalampada è idoneo per l'impiego in apparecchi di classe II se equipaggiato con cavi in doppio isolamento.

If equipped with double insulation cables this lamp-holder is suitable for Class II devices



DATI TECNICI

Tensione nominale:	250 V
Corrente nominale:	2 A
Temperatura di funzionamento:	T250°C
Categoria di tenuta all'impulso:	II
Tipo di connessione conduttori: Morsetto ad innesto rapido per fili rigidi o flessibili . Se flessibili con puntalino terminale di Ø 2mm max	
Capacità connessione morsetti: 0,5 ÷ 0,75 mm ² - Ext.max Ø 2,2mm	
Corpo in steatite: con filetto esterno Ø 20,8x2	
Contatti in acciaio inox	
Fissaggio corpo con clip (accessori disponibili)	
Conforme direttiva:	2006/95/CE

TECHNICAL DATA

Rated voltage:	250V
Rated current:	2 A
Nominal highest working temp.	T250°C
Impulse withstand category	II
Type of connection Quick connection clamp for rigid and flexible wires. If flexible wire with terminal tip max Ø 2mm	
Terminals connection capacity: 0,5 ÷ 0,75 mm ² - Ext.max Ø 2,2mm	
Steatite body wth external thread Ø 20,8x2	
Stainless steel contacts	
Fixing of the body with clips (accessories available)	
In conformity with directive	2006/95/CE

Portalampada *lamp-holder*

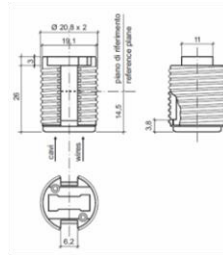
043

versioni disponibili / *available versions*

043

Portalampada G9. con filetto esterno $\varnothing 20,8 \times 2$ senza cavi

/XX lunghezza dei cavi in cm. Da stabilire in fase di ordine



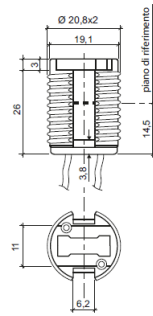
043

Lampholder G9 with external thread $\varnothing 20,8 \times 2$ without cables

/XX is the cable length in cm. To be define at the order

043/XX

Come articolo 043 ma fornito con cavi già connessi.
Cavo di collegamento standard: isolamento in FEP100 (T.max 180°C) lunghezza 15cm, spellatura 6mm. sez. 0,75mm²(AWG20)
Altri tipi di cavo su richiesta

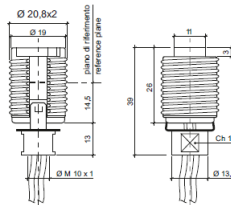


043/XX

As art.043 but supplied with cables already connected.
Standard connection cable: FEP100 insulation (Max T180°C) length 15cm, with removed coated 6mm section 0,75mm² (AWG20)
Other types of leads on demand

043.A/XX

Portalampada assemblato con raccordo in metallo (art.042/16)
Filetto femmina M10x1

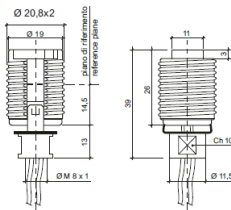


043.A/XX

Lampholder assembled with metal nickel-plated connection (art.042/16). Female thread M10x1

043.A1/XX

Portalampada assemblato con raccordo in metallo (art.042/17).
Filetto femmina M8x1

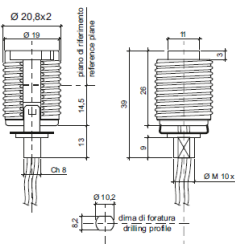


043.A1/XX

Lampholder assembled with metal nickel-plated connection (art.042/17)
Female thread M8x1

043.A2/XX

Portalampada assemblato con raccordo in metallo (art.042/18).
Filetto femmina M10x1



043.A2/XX

Lampholder assembled with metal nickel-plated connection (art.042/18)
Female thread M10x1

Portalampada *lamp-holder*

043

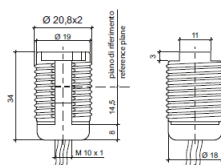
versioni disponibili / *available versions*

/XX lunghezza dei cavi in cm. Da stabilire in fase di ordine

/XX is the cable length in cm. To be define at the order

043.B/XX

Portalampada assemblato con raccordo in LCP (art.042/13)
Filetto femmina M10x1

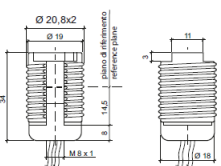


043.B/XX

*Assembled lampholder with LCP connection (art.042/13)
Female thread M10x1*

043.B1/XX

Portalampada assemblato con raccordo in LCP (art.042/19).
Filetto femmina M8x1

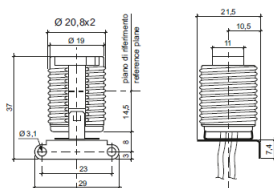


043.B1/XX

*Assembled lampholder with LCP connection (art.042/19)
Female thread M8x1*

043.L/XX

Portalampada assemblato con squadretta a 90° in acciaio nichelato (art.042/15).



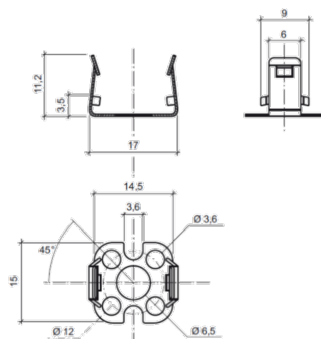
043.L/XX

Assembled lampholder with 90° nickel-plated bracket (art.042/15)

042/08

Molla diritta di supporto portalampada in acciaio nichelato idonea per art.042-043

- 1° fissaggio della molla alla superficie di supporto
- 2° fissaggio del portalampada a scatto sulla molla stessa



042/08

Straight spring supporting the lampholder made of nickel-plated steel suitable for lampholder art.042-043

- 1° fixing of the spring on the support surface
- 2° "click-on" fixing of the lampholder on the spring

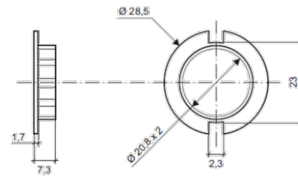
Portalampada lampholder

043

versioni disponibili / *available versions*

043/08

Ghiera in LCP con filetto
 $\varnothing 20,8 \times 2$

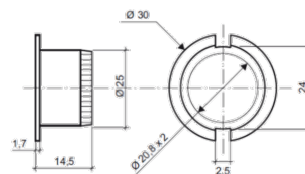


043/08

LCP ring nut with thread
 $\varnothing 20,8 \times 2$

043/09

Ghiera in LCP con filetto
 $\varnothing 20,8 \times 2$

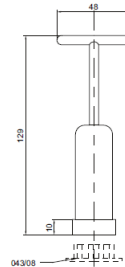


043/09

LCP ring nut with thread
 $\varnothing 20,8 \times 2$

043/10

Chiave a T in PP nero per ghiera
 art. 043/08

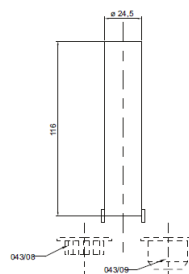


043/10

T key made of PP black for ring
 nut art.043/08

043/11

Chiave a tubo in PP nero per
 ghiera art.043/08-043/09



043/11

Tubular spanner made of PP
 black for ring nut art.043/08-
 043/09