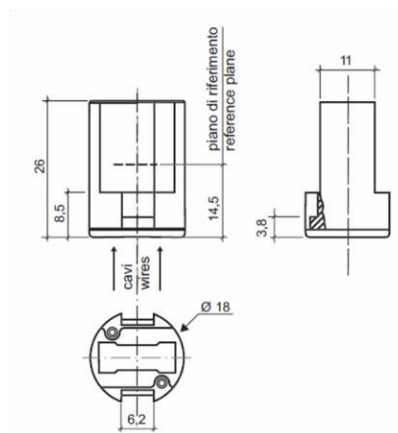


ATTACCO/ CAP

# G9

## Art. 042

Per lampade ad incandescenza  
ad alogeni a tensione di rete  
*For main voltage halogen  
incandescent lamps*



### DATI TECNICI

Tensione nominale:	250 V
Corrente nominale:	2 A
Temperatura di funzionamento:	T250°C
Categoria di tenuta all'impulso:	II
Tipo di connessione conduttori:	Morsetto ad innesto rapido per fili rigidi o flessibili . Se flessibili con puntalino terminale di Ø2mm max.
Capacità connessione morsetti:	0,5 ÷ 0,75 mm <sup>2</sup> - Ext.max Ø 2,2mm
Corpo in steatite:	
Contatti in acciaio inox	
Fissaggio corpo con clip (accessori disponibili)	
Conforme direttiva:	2006/95/CE

### TECHNICAL DATA

Rated voltage:	250V
Rated current:	2 A
Nominal highest working temp.	T250°C
Impulse withstand category	II
Type of connection	Quick connection clamp for rigid and flexible wires. With terminal tip max Ø2mm if flexible wire.
Terminals connection capacity:	0,5 ÷ 0,75 mm <sup>2</sup> - Ext.max Ø 2,2mm
Steatite body	
Stainless steel contacts	
Fixing of the body with clips (accessories available)	
In conformity with directive	2006/95/CE

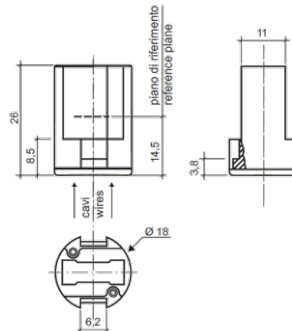
# Portalampada lampholder

## 042

### versioni disponibili / available versions

### 042

Portalampada G9 senza cavi



**Nota:**

**/XX lunghezza dei cavi in cm. Da stabilire in fase di ordine**

### 042/XX

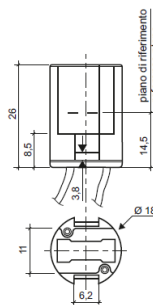
Come articolo 042 ma fornito con cavi già connessi.

Cavo di collegamento standard:

isolamento in FEP100

( T.max 180°C) lunghezza 15cm, spellatura 6mm. sez. 0,75mm<sup>2</sup> (AWG20).

Altri tipi di cavo su richiesta



### 042

Lampholder G9 without cables

**Note:**

**/XX is the cable length in cm. To be define at the order**

### 042/XX

As art.042 but supplied with cables already connected.

Standard connection cable:

FEP100 insulation (Max T180°C)

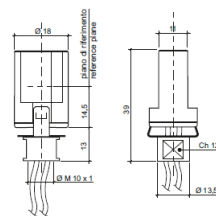
Lenght 15cm,with removed coated 6mm section 0,75mm<sup>2</sup> (AWG20).

Other types of leads on demand

### 042.A/XX

Portalampada assemblato con raccordo in metallo (art.042/16)

Filetto femmina M10x1



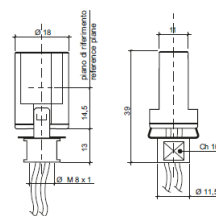
### 042.A/XX

Lampholder assembled with metal nickel-plated connection (art.042/16). Female thread M10x1

### 042.A1/XX

Portalampada assemblato con raccordo in metallo (art.042/17).

Filetto femmina M8x1



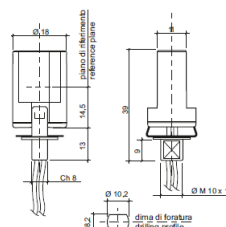
### 042.A1/XX

Lampholder assembled with metal nickel-plated connection (art.042/17). Female thread M8x1

### 042.A2/XX

Portalampada assemblato con raccordo in metallo (art.042/18).

Filetto femmina M10x1



### 042.A2/XX

Lampholder assembled with metal nickel-plated connection (art.042/18). Female thread M10x1

# Portalampada *lamp-holder*

## 042

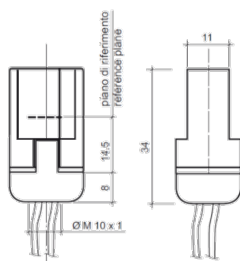
versioni disponibili / *available versions*

**Nota:**

*/XX lunghezza dei cavi in cm. da stabilire in fase di ordine*

### 042.B/XX

Portalampada assemblato con raccordo in LCP (art.042/13)  
Filetto femmina M10x1



**Note:**

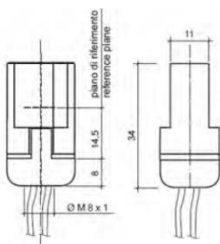
*/XX is the cable length in cm. to be define at the order*

### 042.B/XX

*Lampholder assembled with LCP connection (art.042/13)  
Female thread M10x1*

### 042.B1/XX

Portalampada assemblato con raccordo in LCP (art.042/19)  
Filetto femmina M8x1

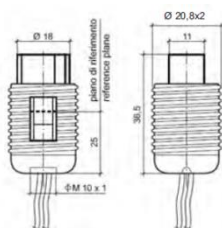


### 042.B1/XX

*Lampholder assembled with LCP connection (art.042/19)  
Female thread M8x1*

### 042.C/XX

Portalampada assemblato con cappuccio in LCP con filetto esterno Ø 20,8x2 (art.042/14).  
Filetto femmina M10x1 per ghiera filettate Ø 20,8x2.  
Vedere scheda art.043



### 042.C/XX

*Lampholder assembled with LCP cap with external thread Ø 20,8x2 (art.042/14)  
Female thread M10x1 for threaded ring Ø 20,8x2  
See data sheet art.043*

# Portalampada *lamp-holder*

## 042

versioni disponibili / *available versions*

**Nota:**

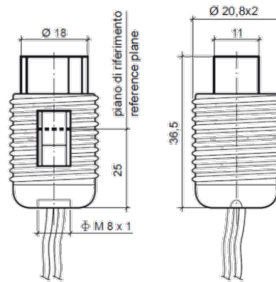
*/XX lunghezza dei cavi in cm. da stabilire in fase di ordine*

**Note:**

*/XX is the cable length in cm. to be define at the order*

### 042.C1/XX

*Portalampada assemblato con cappuccio in LCP con filetto esterno Ø 20,8x2 (art.042/20)  
Filetto femmina M8x1 per ghiere filettate Ø 20,8x2  
Vedere scheda art.043*

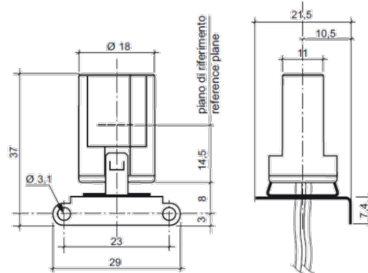


### 042.C1/XX

*Lampholder assembled with LCP cap with external thread Ø 20,8x2 (art.042/20)  
Female thread M8x1 for threaded ring Ø 20,8x2  
See data sheet art.043*

### 042.L/XX

*Portalampada assemblato con squadretta a 90° in acciaio nichelato (art.042/15).*

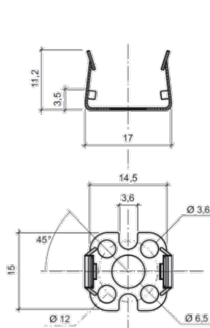


### 042.L/XX

*Lampholder assembled with 90° nickel-plated bracket (art.042/15)*

### 042/08

*Molla diritta di supporto portalampada in acciaio nichelato idonea per portalampada art.042-043  
1° fissaggio della molla alla superficie di supporto  
2° fissaggio del portalampada a scatto sulla molla stessa*



### 042/08

*Straight spring supporting the lampholder made of nickel-plated steel suitable for lampholder art.042-043  
1° fixing of the spring on the support surface  
2° "click-on" fixing of the lampholder on the spring*