

Portalampada Edison

Edison Lamp-holders



ATTACCO/ CAP

E27

Art. 0113

Per lampade ad incandescenza
e scarica

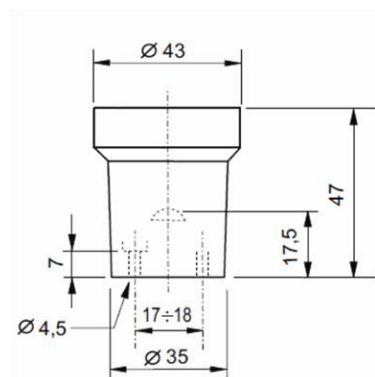
*For incandescent lamps and
discharge lamps*

Nota:

Data la particolare resistenza termica del portalampada in porcellana, esso è indicato anche per l'uso con lampade alogene a tensione di rete

Notes:

In consideration of its particularly high thermal resistance, this porcelain lampholder can be used also with main voltage halogen lamps



DATI TECNICI

| | |
|----------------------------------|---------------------------|
| Tensione nominale: | 250 V |
| Corrente nominale: | 4 A |
| Temperatura di funzionamento: | T210°C |
| Tensione d'impulso max: | 5 kV |
| Categoria di tenuta all'impulso: | II |
| Tipo di connessione conduttori: | Morsetto |
| Capacità connessione morsetti: | 0,5 ÷ 2,5 mm ² |
| Corpo in porcellana | |
| Contatti in ottone ramato | |
| Conforme direttiva: | 2006/95/CE |
| Peso: | gr. 60 |

TECHNICAL DATA

| | |
|--------------------------------|---------------------------|
| Rated voltage: | 250 V |
| Rated current: | 4 A |
| Nominal highest working temp. | T210°C |
| Maximum rated pulse voltage | 5kV |
| Impulse withstand category | II |
| Type of connection | Terminal |
| Terminals connection capacity: | 0,5 ÷ 2,5 mm ² |
| Porcelain body | |
| Copper-plated brass contacts | |
| In conformity with directive | 2006/95/CE |
| Weight | gr.60 |

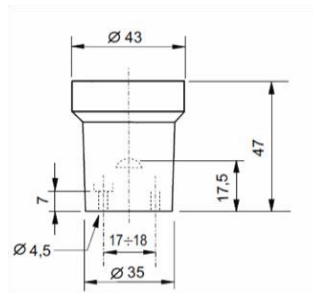
Portalampada *lamp-holder*

Ø113

versioni disponibili / *available versions*

Ø113

Portalampada E27 in
porcellana

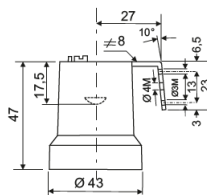


Ø113

Porcelain lampholder E27

Ø113/D1

assemblato con staffa
a 100° completa di vite per
messa a terra idonea per cavi
0,5 ÷ 2,5 mm²

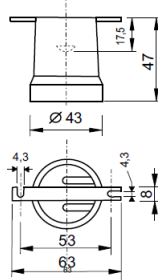


Ø113/D1

*assembled with 100° clamping
plate completed with earthing
screw suitable for leads 0,5 ÷
2,5 mm²*

Ø113/G

assemblato con staffa
diritta

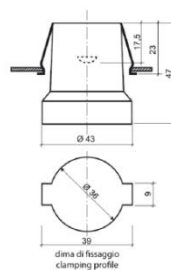


Ø113/G

*assembled with straight
clamping plate*

Ø113/U

assemblato con molla per
aggancio rapido a U per pareti di
spessore 0,5 ÷ 2,5 mm²

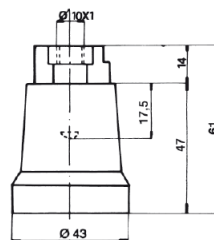


Ø113/U

*Lampholder assembled with
rapid hooking U-spring for walls
thickness 0,5 ÷ 2,5 mm²*

Ø113/P

assemblato con raccordo in
alluminio pressofuso. Filetto
femmina da 10x1, vite di
bloccaggio Tige e vite per
messa a terra idonea per cavi
0,5 ÷ 2,5 mm²



Ø113/P

*Assembled with die-cast
aluminium jumper connection.
10x1 female thread with Tige
locking screw. Earth screw
suitable for leads 0,5 ÷ 2,5
mm²*