

Portalampada Edison *Edison Lamp-holders*



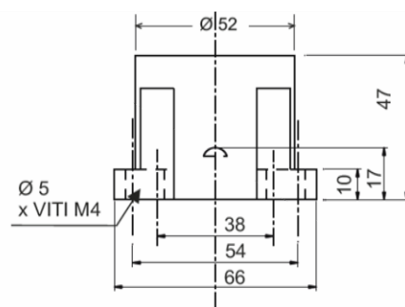
ATTACCO/ *CAP*

E27

Art. 0110

Per lampade ad incandescenza
e scarica

*For incandescent lamps and
discharge lamps*



DATI TECNICI

TECHNICAL DATA

Tensione nominale:	500 V
Corrente nominale:	4 A
Temperatura di funzionamento:	T210°C
Tensione d'impulso max:	5 kV
Categoria di tenuta all'impulso:	III
Tipo di connessione conduttori:	Morsetto
Capacità connessione morsetti:	0,5 ÷ 2,5 mm ²
Corpo in porcellana:	
Contatti in ottone nichelato	
Viola in lastra di ferro zincata	
Conforme direttiva:	2006/95/CE
Marchi di qualità	
Peso:	gr. 120

Rated voltage:	500 V
Rated current:	4 A
Nominal highest working temp.	T210°C
Maximum rated pulse voltage	5kV
Impulse withstand category	III
Type of connection	Terminal
Terminals connection capacity:	0,5 ÷ 2,5 mm ²
Porcelain body	
Nichel-plated brass contacts	
Galvanized iron sheet bulb screw base	
In conformity with directive	2006/95/CE
Quality Standards	
Weight	gr.120

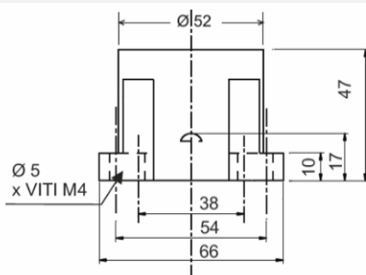
Portalampada *lamp-holder*

Ø110

versioni disponibili / *available versions*

Ø110

Portalampada E27 in porcellana con alette esterne ad interasse di fissaggio 38÷54mm

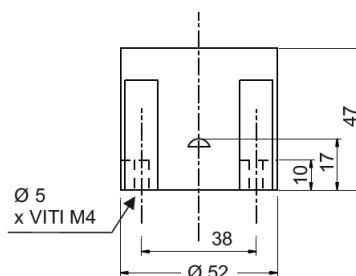


Ø110

Porcelain lampholder E27 with external vanes with fixing wheelbase from 38 to 54mm

Ø110/SA

Senza alette esterne. Interasse di fissaggio 38mm.

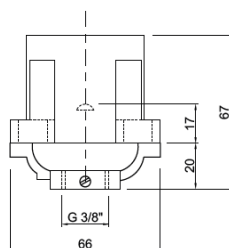


Ø110/SA

Without external vanes. Fixing wheelbase 38mm.

Ø110/P

Assemblato con raccordo in alluminio pressofuso. Filetto femmina da 3/8 G con vite di bloccaggio Tige.

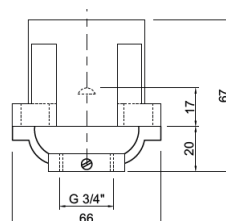


Ø110/P

Assembled with die-cast aluminium jumper connection 3/8 G female thread with Tige locking screw.

Ø110/P1

Assemblato con raccordo in alluminio pressofuso. Filetto femmina da 3/4 G con vite per bloccaggio Tige

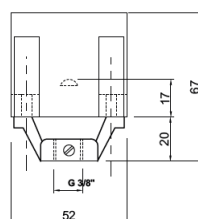


Ø110/P1

Assembled with die-cast aluminium jumper connection 3/4 G female thread, with Tige locking screw.

Ø110/P2

Portalampada senza staffa, assemblato con raccordo in alluminio pressofuso. Filetto femmina da 3/8 G con vite di bloccaggio Tige



Ø110/P2

Lampholder without bracket assembled with die-cast aluminium jumper connection 3/8 G female thread with Tige locking screw